

installed power :	57 kWp
year :	Schneider Electric
architect :	Arche 5
year :	2016



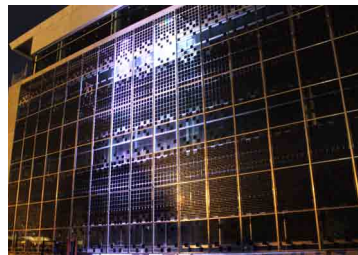
## Canopy with silkscreen and LEDs

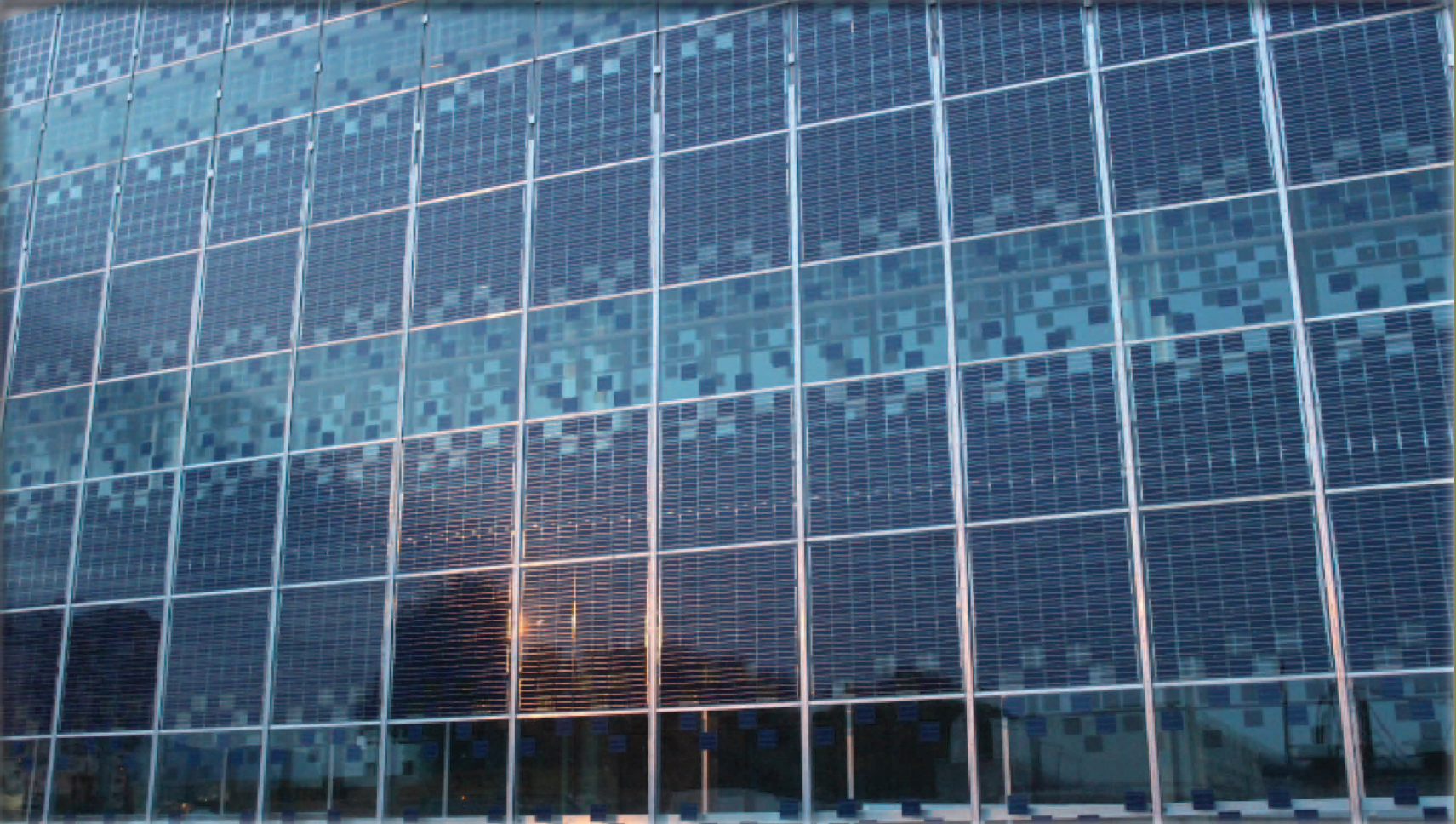
New site of Schneider Electric in Grenoble : Technopôle

Office buildings

Installation of 3 photovoltaic canopies on the facade with silkscreen on glasses and LEDs

- Integration of new 2ES modules with cells removed
- Incorporation of glasses with silk-screen printing imitating the panels pattern
- Integration of LEDs on the top of the canopies throwing lighting effects.
- Contribution of luminosity in the buildings thanks to the 2ES double-glass semi-transparent panels





38 TECH - SCHNEIDER ELECTRIC  
GRENOBLE